

**Hotline: 0 73 03 / 901 980**



Zur Aumühle 36 | 89257 Illertissen  
Tel.: 0 73 03 / 901 980 | Fax 0 73 03 / 901 981 8  
info@wap-nilfisk-alto-shop.de

**[www.wap-nilfisk-alto-shop.de](http://www.wap-nilfisk-alto-shop.de)**

# PARTS LIST

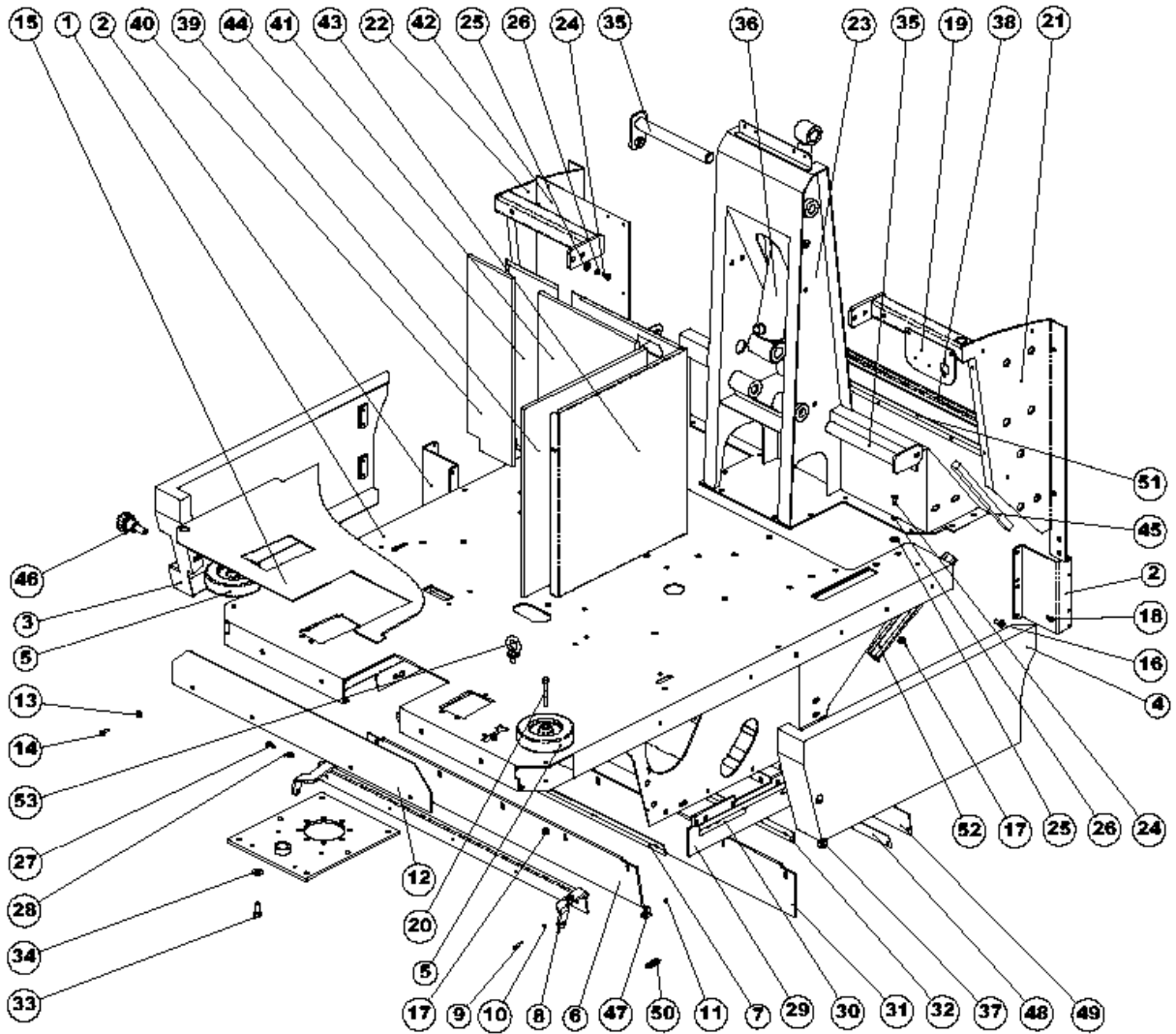


2019.04.25

# TABLE OF CONTENTS

---

ZCHNG. A RAHMEN BAUGRUPPE .....	1
ZCHNG. F HINTERE ABDECKUNG & FILTER .....	3
DRAW.F Rear cover and filter .....	5
ZCHNG. G HAUPTBÜRSTE .....	7
ZCHNG. H BENZINMOTOR BAUGRUPPE .....	9
ZCHNG. I SEITENBESEN .....	11
ZCHNG. L HYDRAULIKSYSTEM .....	13
ZCHNG. M ABFALLBEHÄLTER BAUGRUPPE .....	15
ZCHNG. N ELEKTRONIK-BAUGRUPPE .....	17
ZCHNG. B FRONTABDECKUNG BAUGRUPPE .....	19
DRAW.O Accessories .....	21
DRAW.O Accessories .....	23
ZCHNG. O ZUBEHÖR .....	25
ZCHNG. C TRAKTIONSBAUGRUPPE .....	27
ZCHNG. D LENKUNG BAUGRUPPE .....	29
DRAW.E Control pedal and lever .....	31

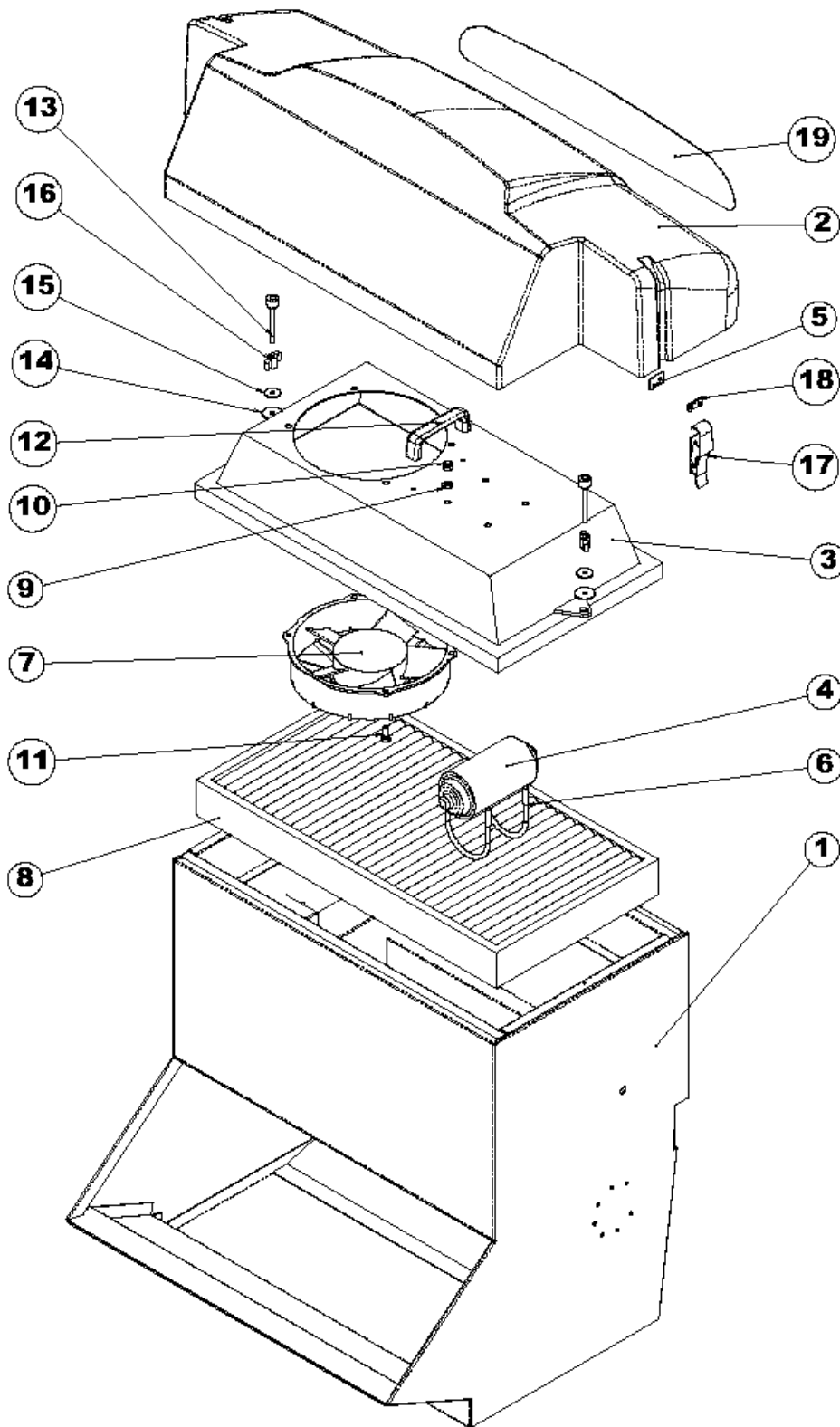


Resource notes:

Pos.	Artikel-Nr.	Menge	Variante	Notes
01	145 5650 000	1	FRAME	[1]
02	145 5667 000	2	SIDE HATCH SUPPORT	[1]
03	145 5668 000	1	HATCH RIGHT SIDE	[1]
04	145 5669 000	1	HATCH LEFT SIDE	[1]
05	145 1966 000	2	Abweisrolle Saugfuss 4100	[1]
06	146 1152 000	1	Schürze, vorne, n. mark.	
07	145 4655 000	1	Halteblech f. Gummilippe	[1]
08	145 1872 000	1	Flaggummihalter SR 1300	[2]
09	33003951	5	SCREW M4X20 HEX HD F/THD ISO4017	[1]
10	33005838	5	WASHER SPRING LOCK M4 DIN127-B	
11	33023197	5	NUT LOCK HEX M4 ISO7040 10 PCS SET	[2]
12	145 5699 000	1	FOOT STOP 5	[1]
13	145 1129 000	4	Unterlegscheibe	[2]
14	33004578	4	Schraube TPSEI 6x20	
15	145 5705 000	1	FOOTBOARD MAT	[1]
16	33023307	8	SCREW M8X16 HEX HD ISO4017 10 PCS SET	
17	33005504	8	Mutter 8mm	
18	33004562	8	Schraube M5 x 14	[3]
19	145 5825 000	1	BRACKET	[1]
20	33004002	2	SCREW M8X60 HEX HD F/THD ISO4017	
21	145 5694 000	1	LEFT SUPPORT FOR UNDERCOV	[1]
22	145 5693 000	1	RIGHT SUPPORT FOR UNDERCO	[1]
23	145 5651 000	1	SUPPORT FOR CONTAINER	[1]
24	33023255	2	SCREW M6X16 HEX ISO4017 10 PCS SET	
25	145 6016 000	2	WASHER PLAIN M8X27 ISO70093	[1]
26	33023223	2	U-Scheibe M8 UNI1751B 10 Stck.	
27	33023652	2	SCREW M6X16 HD HEX ISO4762 10PCS.SET	
28	33023469	2	NUT LOCK HEX M6 ISO7040 10 PCS SET	
29	145 5927 000	1	Spritzgummi seitlich	
30	145 5929 000	1	Halter SR 1100 ECO	
31	146 1151 000	1	Schürze, hinten, n. mark.	
32	145 4657 000	1	PLATE REAR SKIRT	[2]
33	33005445	6	Schraube M8x25	
34	L08300000	6	Beilagsscheibe 8x24	
35	145 5655 000	2	PIN	[1]
36	145 5654 000	1	HYDRAULIC CYLINDER	[1]
37	L08601000	2	Sechskantmutter M12	[2]
38	146 0391 000	1	GASKET REINFORCED L.720MM	[1]
39	145 5940 000	1	PANEL BULKHEAD LONGITUDINAL	[1]
40	145 5939 000	1	PANEL BULKHEAD FOR EXTENSION	[1]
41	145 5805 000	1	PANEL BULKHEAD TRASVERSAL	[1]
42	145 5907 000	2	DUST COVER	[1]
43	145 5804 000	1	engine dividing	[1]
44	145 5902 000	1	EXTENSION PANEL BULKHEAD TRASVERSAL	[1]
45	145 6027 000	2	GASKET	
46	145 8471 000	1	Knopf M8x60	[1]
47	145 5126 000	1	Klammer	
48	146 0019 00	1	BRACKET	[1]
49	146 0018 00	1	Gummileiste f. SR 1300	[1]
50	145 9579 000	1	Feder 12x1,6x45	
51	146 0390 000	1	PLATE	[1]
52	146 0313 000	2	GASKET	
53	145 5998 000	2	EYEBOLT M10 DIN580	[4]

## Part Notes:

- [1] - GUARANTEE DATE EXPIRED
- [2] - STOCK COVERS GUARANTEE
- [3] - CLARITY PRUNING
- [4] - ITEM NO LONGER AVAILABLE

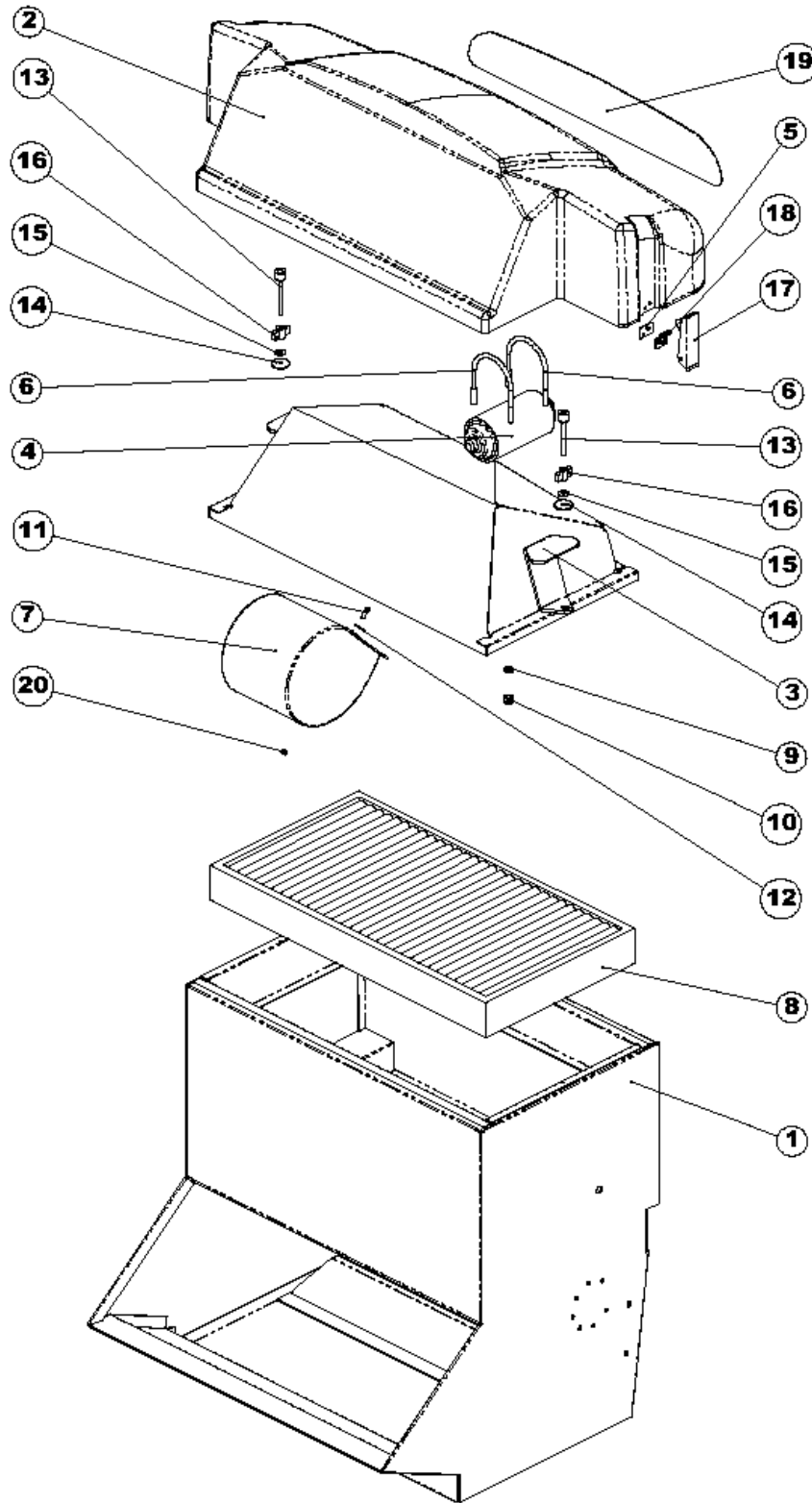


Resource notes:

Pos.	Artikel-Nr.	Menge	Variante	Notes
01	145 5774 000	1	Filter container	[1]
02	145 5708 000	1	GREY 7001 COVER CONTAINER	[1]
03	145 5687 000	1	FILTER FIXING FRAME	
04	145 5539 000	1	Motor Filtershak.	
05	145 6064 000	1	Metallplättchen	[2]
06	145 5979 000	2	COLLAR METAL U M8 RAW	[1]
07	145 5029 000	1	FAN ELECTRIC AXIAL 24V	[1]
08	1463523000	1	Filter Papier Panel	
09	33023208	1	WASHER M8 UNI6592 10 PCS SET	
10	33005565	4	Selbstsichernde Mutter M8	
11	33005444	4	Schraube M8x20 verzinkt	
12	145 8461 000	1	Handgriff 475	[2]
13	145 1354 000	2	Rändelschraube M6x65	
14	145 4916 000	2	WASHER PLAIN D.5X30X2 RUBBER	[1]
15	1466530000	2	WASHER PLAIN M6X18 ISO7093 10 PCS SET	
16	145 0461 000	2	Flügelmutter M6AW 465	
17	145 5865 000	2	Klammer	[2]
18	145 5866 000	2	Haken f. Befestigung	[2]
19	145 5836 000	1	PROTECTION WIRE-NET	[1]

## Part Notes:

- [1] - GUARANTEE DATE EXPIRED  
 [2] - STOCK COVERS GUARANTEE



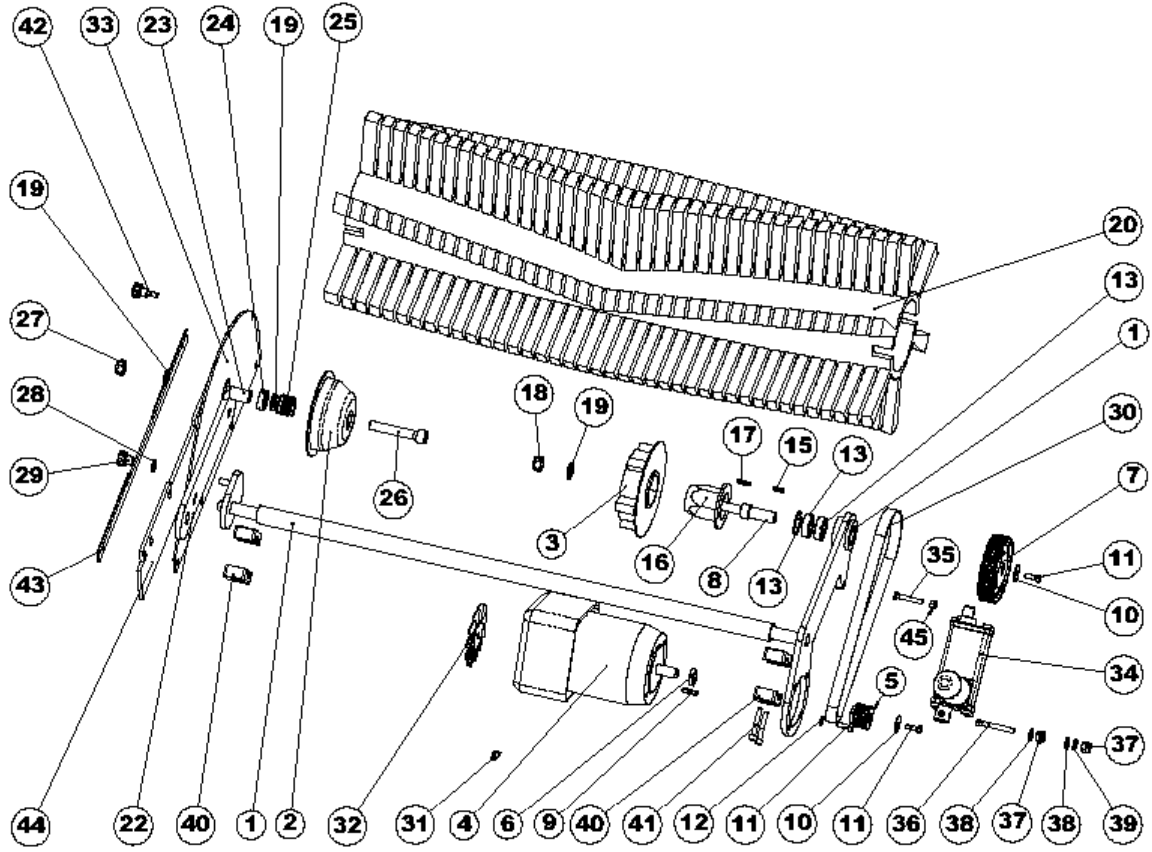
Resource notes:

Pos.	Artikel-Nr.	Menge	Variante	Notes
01	145 5774 000	1	Filter container	[1]
02	145 5708 000	1	GREY 7001 COVER CONTAINER	[1]
03	146 0053 00	1	FRAME.FILTERSHAKER MOTOR	[1]
04	145 5539 000	1	Motor Filtershak.	
05	145 6064 000	1	Metallplättchen	[2]
06	1465997000	2	COLLAR METAL U M8 SIP	
07	146 0061 00	1	BLOWER CENTRIFUGAL 24V	[1]
08	1463523000	1	Filter Papier Panel	
09	L08300000	4	Beilagsscheibe 8x24	
10	33005602	4	NUT SELF L. M4 UNI7473	
11	33003950	4	Schraube	[1]
12	L08300000	4	Beilagsscheibe 8x24	
13	145 1354 000	2	Rändelschraube M6x65	
14	145 4916 000	2	WASHER PLAIN D.5X30X2 RUBBER	[1]
15	1466530000	2	WASHER PLAIN M6X18 ISO7093 10 PCS SET	
16	145 0461 000	2	Flügelmutter M6AW 465	
17	145 5865 000	2	Klammer	[2]
18	145 5866 000	2	Haken f. Befestigung	[2]
19	145 5836 000	1	PROTECTION WIRE-NET	[1]
20	33005565	4	Selbstsichernde Mutter M8	

## Part Notes:

- [1] - GUARANTEE DATE EXPIRED  
[2] - STOCK COVERS GUARANTEE

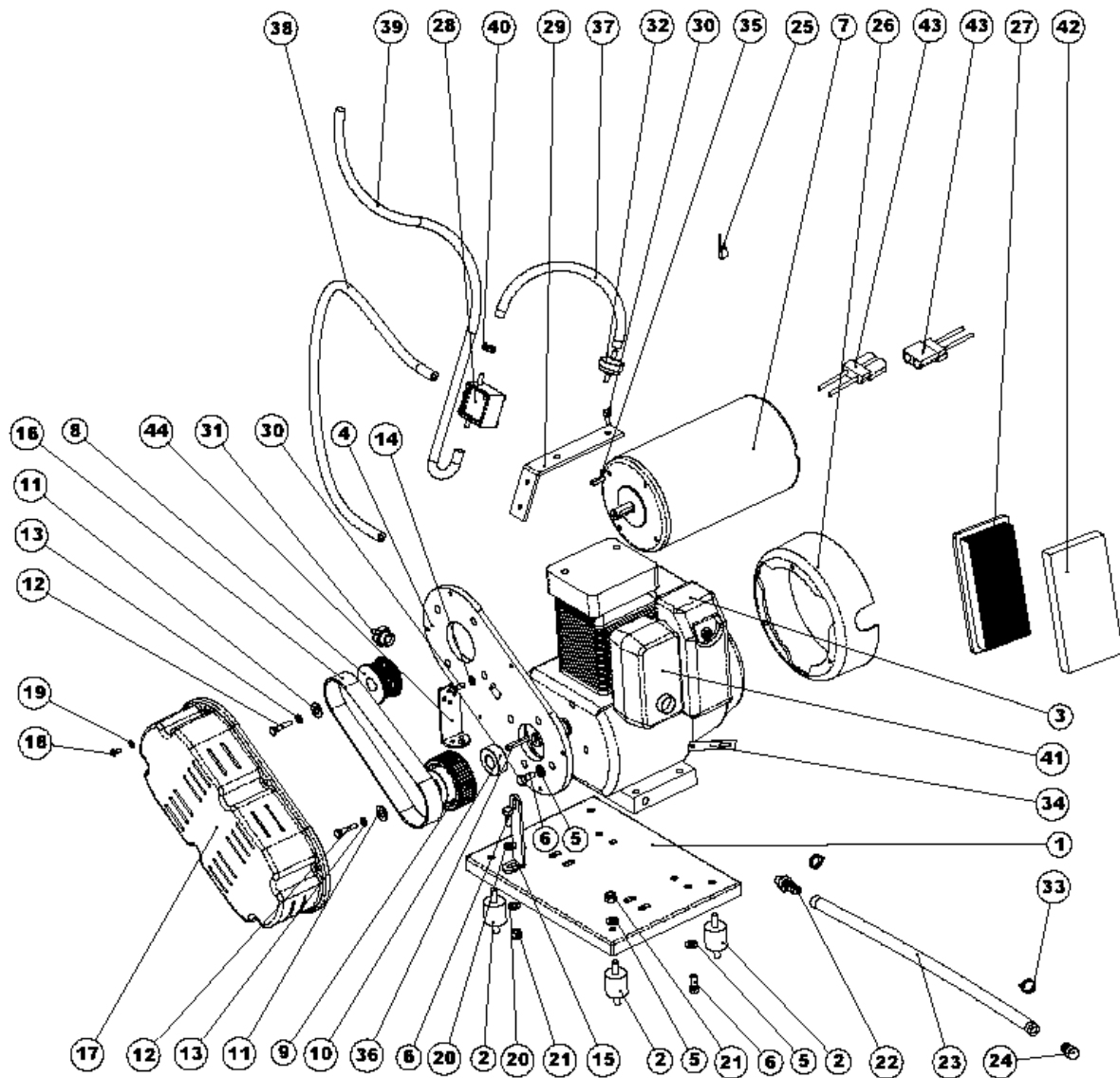




Pos.	Artikel-Nr.	Menge	Variante	Notes
01	145 5575 000	1	MAIN BRUSH SHAFT	[1]
02	1467023000	1	HUB LEFT MAIN BROOM PKD	
03	145 5661 000	1	Bürstenklaue rechts	[1]
04	145 1775 000	1	Elektromotor 24V 500WattBürstenantrieb	[1]
05	145 1849 000	1	Riemenscheibe SR 5110	
06	145 1950 000	1	Abstandhalter	[2]
07	145 1850 000	1	Riemenscheibe	
08	145 1791 000	1	Welle Kehrwalze SR 1100Eco	
09	1466146000	1	KEY 5X5X25 UNI6604A PKD	
10	1466332000	1	WASHER 6X24X2 UNI6593 10 PCS SET	
11	33023470	5	SCREW M6X20 HEX HD ISO4017 10 PCS SET	
12	1466332000	1	WASHER 6X24X2 UNI6593 10 PCS SET	
13	1467637000	2	BEARING BALL 6002 2RS SIP	
14	33006162	1	RING D 32 UNI7437	[2]
15	145 8197 000	1	Keil 4x4x20	
16	1463877000	1	Steckzapfen Hauptbesen	[3]
17	145 6055 000	1	Schloßschraube 4x4x16	[2]
18	L08601000	1	Sechskantmutter M12	[2]
19	33003720	3	U-Scheibe	
20	145 4881 000	1	Kehrwalze 300x800 mm, PP 0,7-1,4	[2]
22	1467720000	1	LEVER GALV. MAIN BROOM SIP	
23	145 2662 000	1	Scheibe 12x17x28	
24	44905699	1	BEARING BALL 6001 2RS PKD	
25	1467024000	1	SPRING PKD	
26	33004442	1	Schraube M12x60	[2]
27	L08601000	1	Sechskantmutter M12	[2]
28	33023208	1	WASHER M8 UNI6592 10 PCS SET	
29	145 5035 000	1	Griffmutter M 8	
30	145 1851 000	1	Zahnriemen HTD 710 5M 15	
31	1464432000	1	Kohle Kit 4 Stück	
32	145 2181 000	1	FAN	
33	145 1827 000	1	Halter Hauptbesen SR 1100	
34	145 5573 000	1	Hubmotor 24 V zu SR 1300	[1]
35	145 5877 000	1	Schraube	[1]
36	145 5900 000	1	SCREW M8X55 C/SUNK FLAT HD HEX ISO10642	[1]
37	33005565	2	Selbstsichernde Mutter M8	
38	33023208	1	WASHER M8 UNI6592 10 PCS SET	
39	33005842	2	U-Scheibe	
40	145 1891 000	2	Halbmond Wellenfixation	
41	33004350	4	SCREW M6X40 CAP HD HEX SOCK ISO4762	
42	1466153000	2	KNOB LOBED M6X15 PKD	
43	145 5929 000	1	Halter SR 1100 ECO	
44	145 5927 000	1	Spritzgummi seitlich	
45	33005562	1	Mutter M6	

## Part Notes:

- [1] - GUARANTEE DATE EXPIRED
- [2] - STOCK COVERS GUARANTEE
- [3] - SEE TSB IT 2008-023

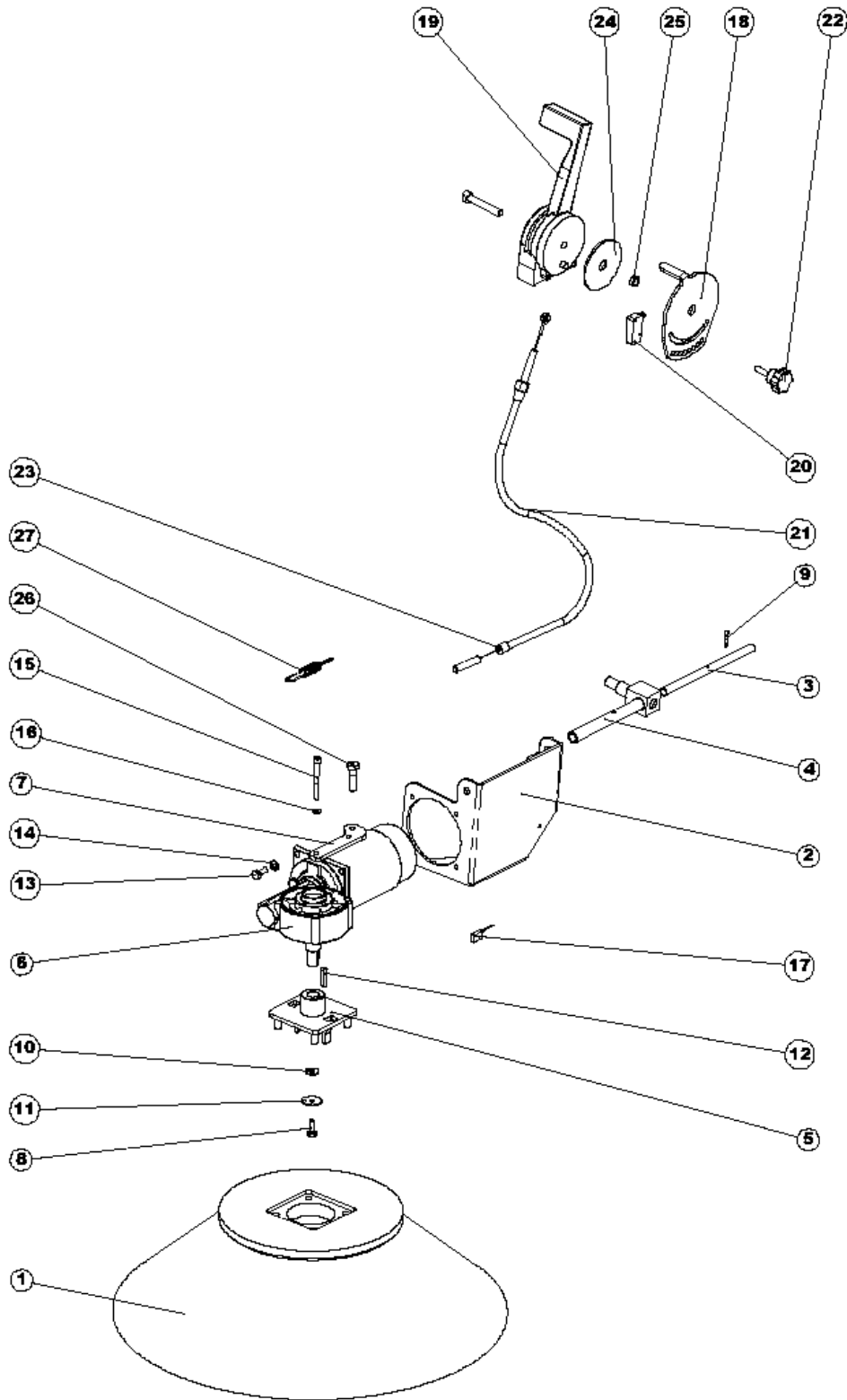


Resource notes:

Pos.	Artikel-Nr.	Menge	Variante	Notes
01	145 6111 000	1	Motorabstützplatte	
02	145 8054 000	4	Schwingungsdämpfer M8 60S	
03	145 5886 000	1	Petrol engine 3.5 HP	[1]
04	145 1844 000	1	SUPPORT DYNAMOTOR 5110 P - 5120 P	[2]
05	33023208	6	WASHER M8 UNI6592 10 PCS SET	
06	33005444	6	Schraube M8x20 verzinkt	
07	1467673000	1	DYNAMOTOR 1100W 24V KIT	
08	145 5749 000	1	Pulley	[3]
09	145 5750 000	1	Riemenscheibe	[2]
10	145 1958 000	1	Distanzstück SR 1100 ECO	[2]
11	1466332000	1	WASHER 6X24X2 UNI6593 10 PCS SET	
12	145 5469 000	2	SCREW M6X30 HEX HD ISO4017 SCOTCH-GRIP	[2]
13	33005851	2	Unterlegscheibe	
14	33023223	1	U-Scheibe M8 UNI1751B 10 Stck.	
15	145 4617 000	1	PLATE DYNAMOTOR SUPPORT	[2]
16	145 5751 000	1	Zahnriemen 565 5M 25	[2]
17	145 1795 000	1	Dynamodeckel	[2]
18	33004342	6	SCREW M6X10 CAP HD HEX SOCK ISO4762	
19	33005913	6	WASHER M6 UNI6592	
20	33023208	2	WASHER M8 UNI6592 10 PCS SET	
21	33023207	5	NUT SELF L. M8 UNI7473 10 PCS SET	
22	145 4350 000	1	HOLDER RUBBER M12x1.5	[2]
23	145 5037 000	1	HOSE OIL	
24	145 9220 000	1	Zapfen D10	
25	L08603949	1	Kohlenbürsten Kit 4pcs	
26	145 4886 000	1	DEFLECTOR	[2]
27	145 5885 000	1	Luftfilter SW850 SL148717211-883-W21 SL1	[2]
28	145 5710 000	1	Pump	[2]
29	145 5826 000	1	BRACKET	[2]
30	33023255	2	SCREW M6X16 HEX ISO4017 10 PCS SET	
31	145 5888 000	1	VACUUM SOCKET	[2]
32	145 8167 000	1	FILTER PETROL	[2]
33	145 9221 000	2	Klammer 8/14-24 minus	[2]
34	145 5277 000	1	PLATE	[2]
35	145 9773 000	1	Keil 6 x 6 x 20 mm	
36	145 8011 000	1	Keil zu 3PS Hondamotor	
37	145 5960 000	1	RUBBER HOSE L 120	
38	145 5961 000	1	RUBBER HOSE L 450	
39	145 5959 000	1	RUBBER HOSE L 1300	
40	145 8582 000	7	Schlauchbriede AR 4095	
41	145 5884 000	1	MUFFLER	[2]
42	145 5971 000	1	Vorfilter 17218-883-W21SL 1728	[3]
43	9100002248	2	CONNECTOR 50A RED SIP	
44	145 4755 000	1	BRACKET BATTERY CONNECTOR5070	[2]

## Part Notes:

- [1] - OBSOLETE
- [2] - GUARANTEE DATE EXPIRED
- [3] - STOCK COVERS GUARANTEE

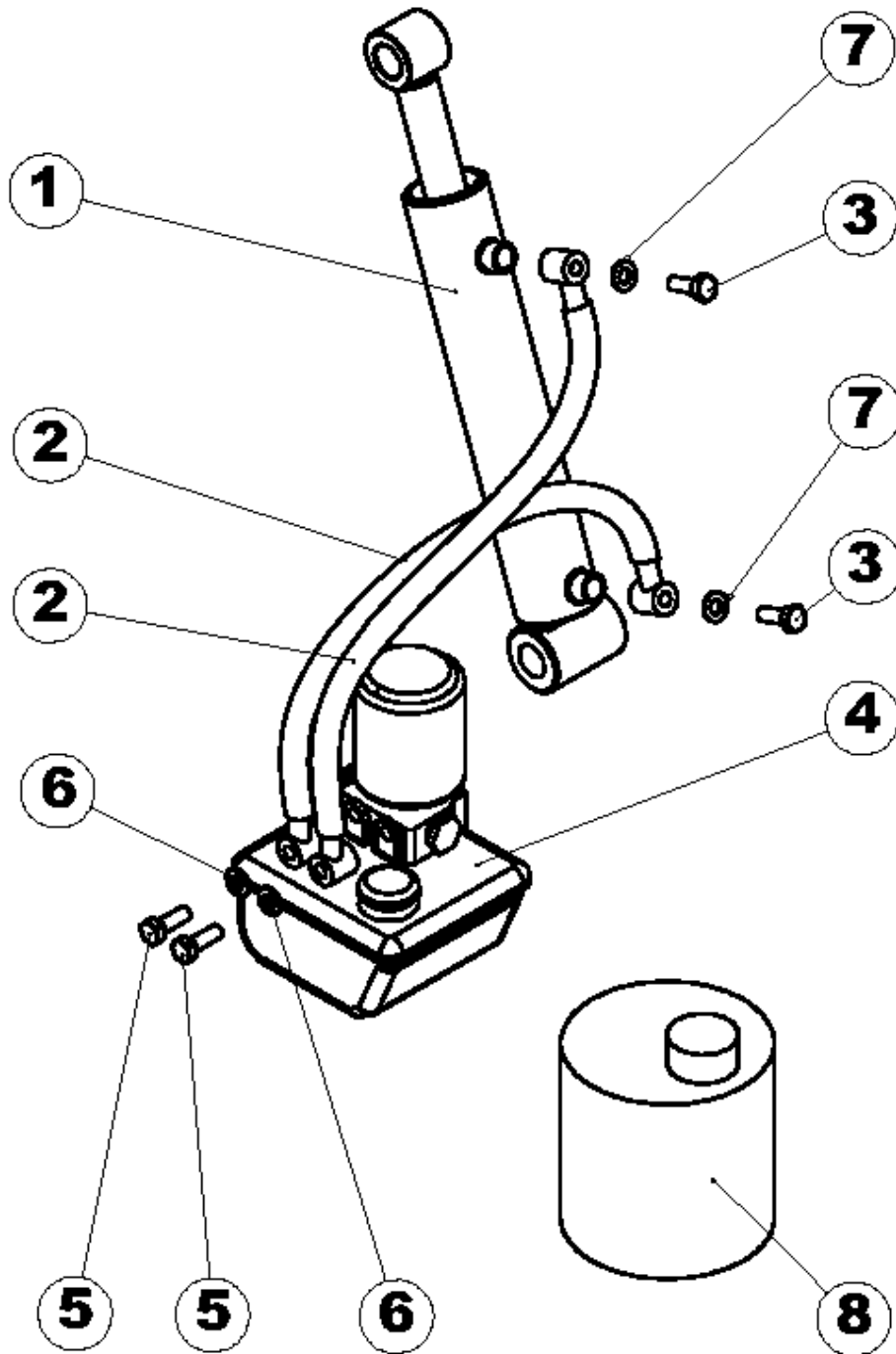


Resource notes:

Pos.	Artikel-Nr.	Menge	Variante	Notes
01	145 1900 000	1	Seitenbesen PP 1,4 250X460 mm	[1]
02	1463150000	1	Aufhängung Rechts	
03	145 1951 000	1	Bolzen	
04	145 1792 000	1	Bolzen	
05	146 0402 000	1	Flansch 14 mm SeitenbesenSchnellkupplung	
06	145 1786 000	1	REDUCTION GEARMOTOR 90W 24V RIGHT	[1]
07	145 1831 000	1	Halter	[1]
08	145 1218 000	2	Schraube M6x16mit Linksgewinde	[1]
09	145 9624 000	1	Splint	
10	145 2644 000	1	BELLEVILLE WASHER 6.2X15X0.5 DIN2093	
11	1466332000	1	WASHER 6X24X2 UNI6593 10 PCS SET	
12	1466146000	1	KEY 5X5X25 UNI6604A PKD	
13	33023255	4	SCREW M6X16 HEX ISO4017 10 PCS SET	
14	33005913	4	WASHER M6 UNI6592	
15	33004335	2	Schraube M5x50	[1]
16	33023195	2	WASHER M5 UNI6592 10 PCS SET	
17	1464434000	1	Kohlebürsten 2Stück	
18	145 1988 000	1	RETAINER RIGHT SIDE BROO	[1]
19	33003324	1	Hebel Seitenbesen	
20	1466505000	1	MICROSWITCH 6A 250V	[1]
21	145 8933 000	1	Kabelzug Seitenb. 5110/20	
22	145 9746 000	1	Rändelschraube 6x20 mmnicht mehr bestell	[1]
23	145 2390 000	1	Büchse	[1]
24	145 1986 000	1	Buchse d.12,5xd.65x1	[1]
25	1467026000	1	SPACER D.8X12 H.5 ZNT SIP	
26	145 0234 000	1	Justierer	[1]
27	145 9184 000	1	Feder	

## Part Notes:

[1] - GUARANTEE DATE EXPIRED



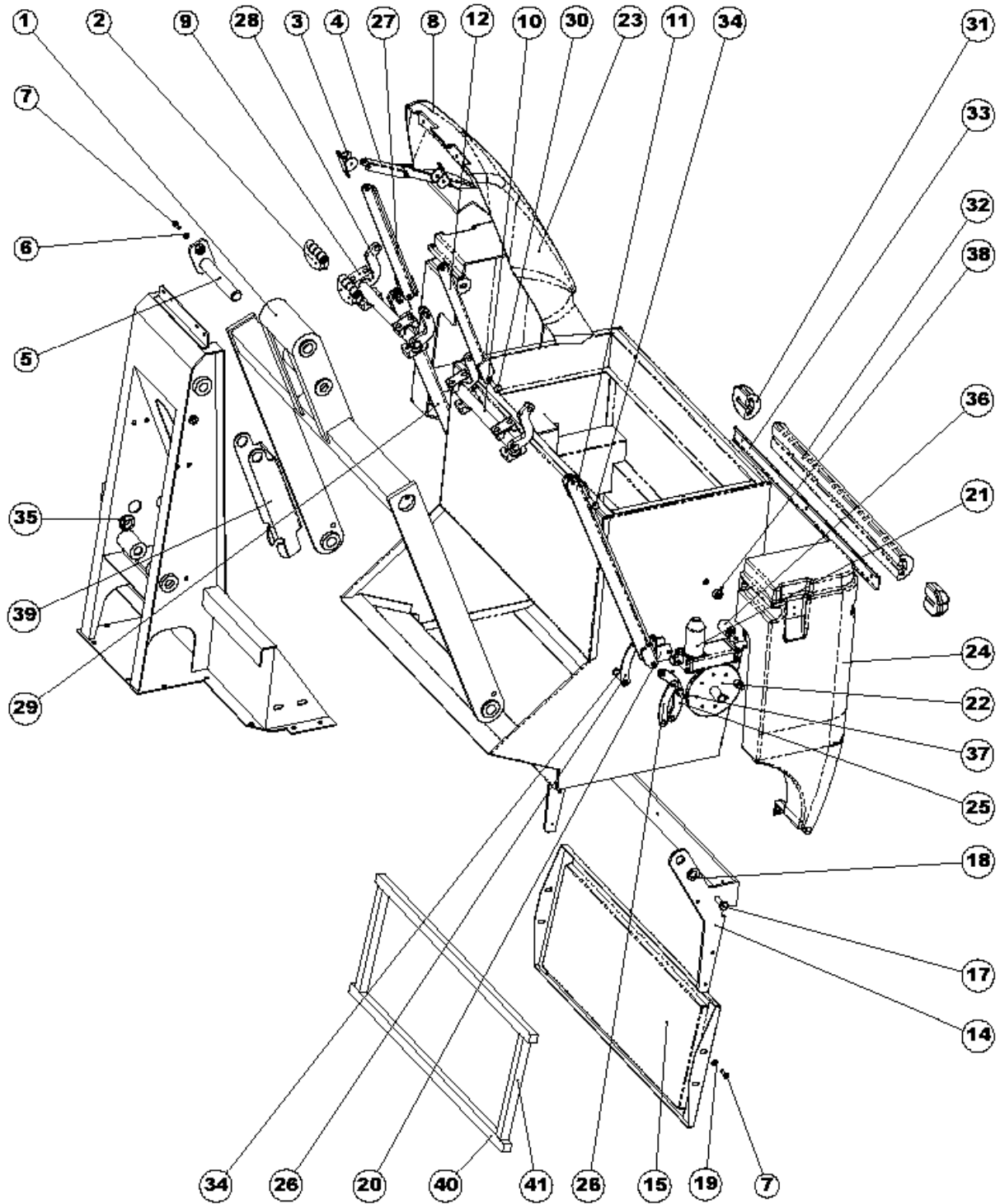
Resource notes:

Pos.	Artikel-Nr.	Menge	Variante	Notes
01	145 5654 000	1	HYDRAULIC CYLINDER	[1]
02	146 0488 000	2	HOSE	[1]
03	1467015000	2	BANJO BOLT 1/8 L.22 SPEC. 2 PCS SET	
04	145 6005 000	1	HYDRAULIC CARD	[1]
05	145 6022 000	2	Schraube m. Loch	[1]
06	1467004000	4	SEAL BONDED 1/8 10 PCS SET	
07	33023468	4	SEAL BONDED 3/8 10 PCS SET	[2]

## Part Notes:

- [1] - GUARANTEE DATE EXPIRED
- [2] - STOCK COVERS GUARANTEE



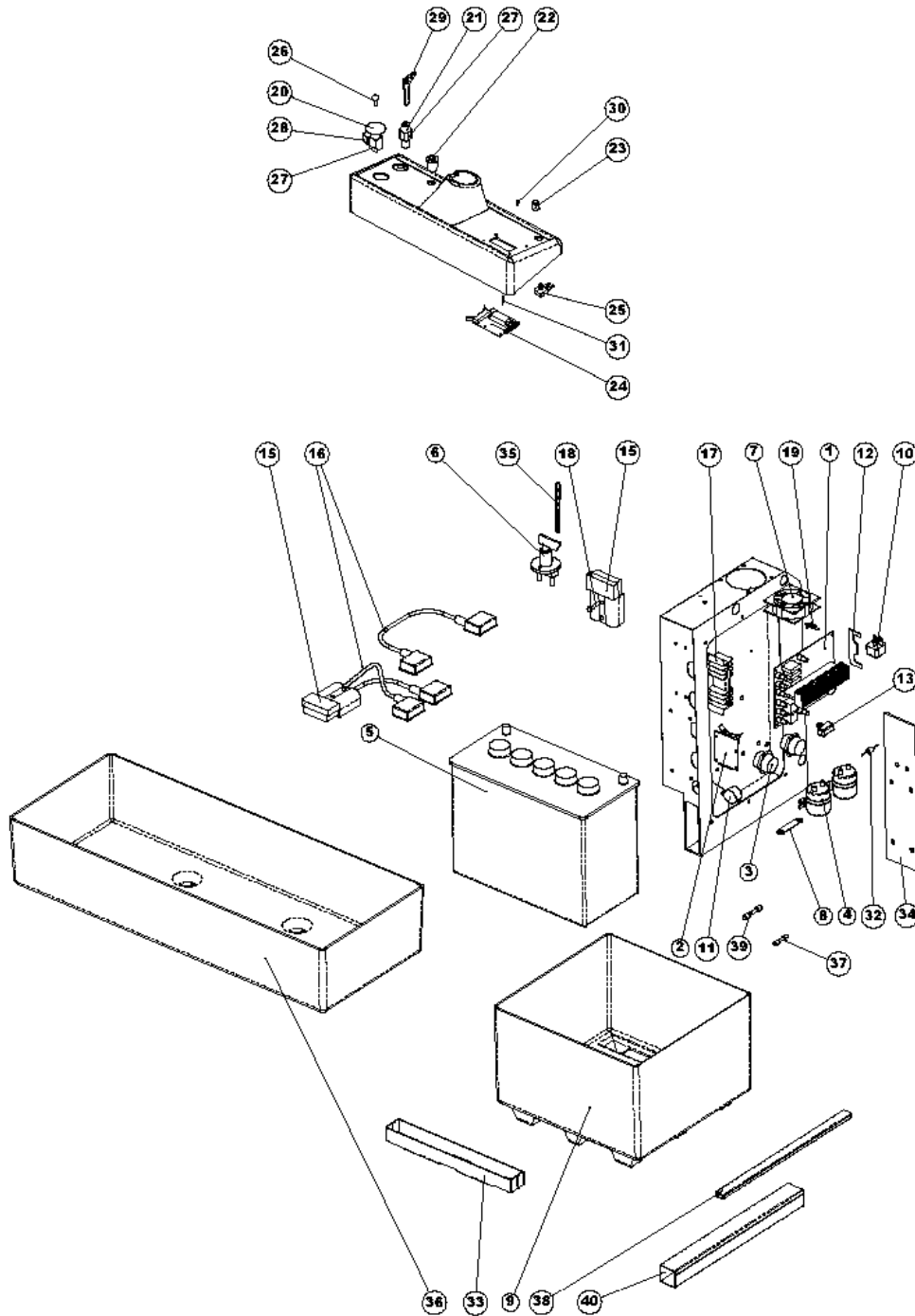


Resource notes:

Pos.	Artikel-Nr.	Menge	Variante	Notes
01	145 5652 000	1	Lifting arm	[1]
02	145 0399 000	2	Scharnier Aluminium	[1]
03	145 5657 000	2	HINGE	[1]
04	145 5653 000	1	LEVER CONTROL	[1]
05	145 5656 000	1	PIN	[1]
06	33005913	1	WASHER M6 UNI6592	
07	33004578	5	Schraube TPSEI 6x20	
08	145 5660 000	1	Grey 7001 undercover S	[1]
09	145 5776 000	4	COLLAR D.25	[1]
10	145 5767 000	1	SHAFT OF ROTATION SX	
12	145 5769 000	1	PIN	[1]
11	145 5770 000	1	PIN	[1]
14	145 5761 000	1	LEVER FOR HACTH CONTAINER	[1]
15	145 5775 000	1	Hacth	[1]
17	33004009	2	SCREW M10X25 HEX HD F/THD ISO4017	
18	33005919	2	U-Scheibe	
19	33005913	4	WASHER M6 UNI6592	
20	145 5788 000	1	JACK BRACKET	[1]
21	145 5573 000	1	Hubmotor 24 V zu SR 1300	[1]
22	145 5764 000	2	PIN FOR CONTAINER	[1]
23	145 5782 000	1	GREY RIGHT SIDE UNDERCOVE	[1]
24	145 5785 000	1	Seitenwand links SR 1300hinten	[1]
25	145 5762 000	2	ARM OF ROTATION	[1]
26	145 5763 000	4	Arm SchmutzbehälterSR 1300 Eco	[1]
27	145 5766 000	1	PIN	[1]
28	145 5768 000	1	SHAFT OF ROTATION DX	[1]
29	145 5771 000	1	Pin	[2]
30	145 5772 000	4	PIN	[1]
31	145 4640 000	2	Stossdämpferendstück	[1]
32	145 5778 000	1	rear guard L 575	[2]
33	145 5779 000	1	REAR RUBBER PLATE	[1]
34	145 5773 000	2	PIN FOR ARM	[1]
35	145 5983 000	2	CABLE GUIDE D.28	[1]
36	145 5789 000	1	JACKHOLDER PIN	[1]
37	145 5765 000	2	Bolzen	[1]
38	145 5806 000	2	SPACER 12X20X8	[1]
39	145 5980 000	1	Bracket for cylinder	[1]
41	146 0141 00	2	GASKET	[1]
41	146 0142 00	2	GASKET	[1]

## Part Notes:

- [1] - GUARANTEE DATE EXPIRED  
 [2] - OBSOLETE



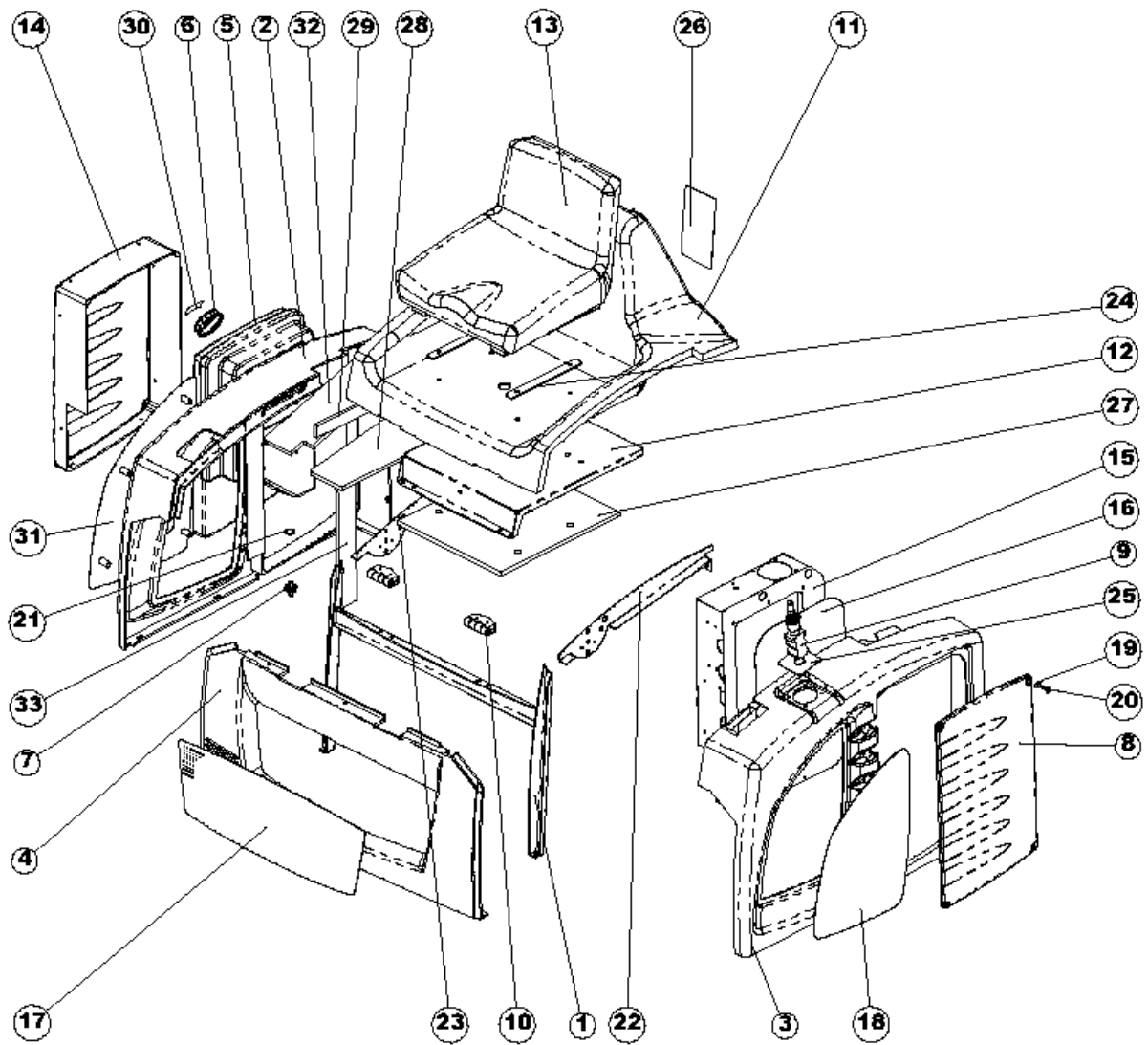
Resource notes:

POSITION 29 INCLUDES SWITCH KEY PLUS TWO KEYS POSITION 21 INCLUDES SWITCH KEY, PLUS TWO KEYS AND A CONTACT

Pos.	Artikel-Nr.	Menge	Variante	Notes
01	145 1785 000	1	Karte zu 5110/20	[1]
02	146 0288 000	1	Card for container filter	[1]
03	145 8874 000	2	INSULATOR M8	[1]
04	145 0300 000	1	Relais 24V 120Ah	
05	145 0116 000	2	BATTERY 12V 140AH	[2]
06	145 1779 000	1	Hauptschalter	[3]
07	145 2298 000	1	FAN D.80 24V	[1]
08	145 4616 000	1	PLATE ELECT.SWITCH BRIDGE5110	[1]
09	145 0504 000	1	Battery container	[1]
10	145 8512 000	1	Relais 24V zu 345-355	[1]
11	145 8877 000	1	BUZZER 24V DC	[1]
12	145 1980 000	1	Sicherung 100A	[3]
13	145 4615 000	1	Widerstand 0,56 OHM 50W	[1]
15	1467029000	1	CONNECTOR 175A RED PKD	
16	145 6077 000	1	BATTERY HARNESS	[1]
17	145 5502 000	1	HEAT SINK W/DIODE	[1]
18	145 5469 000	1	SCREW M6X30 HEX HD ISO4017 SCOTCH-GRIP	[1]
19	145 0516 000	6	SUPPORT L.6.3 DUAL LOCK. PLAST. F CONTR.	[1]
20	146 2905 000	1	Notausschalter	[3]
21	1463729000	1	Schlüsselschalter	
22	145 8885 000	1	Schalter rot	[3]
23	145 4719 000	1	Drehknopf zuPotentiometer	
24	145 5703 000	1	Display zu SR 1100 -SR 1300	[1]
25	145 4718 000	1	Potentiometer	[1]
26	145 1233 000	1	Lampe 24V/3W	[1]
27	146 1730 000	2	Kontakt NA	
28	146 1728 000	1	Kontakt	
29	146 2901 000	1	Schlüsselschalter kompl.SR 1300 HB	[3]
30	145 1720 000	4	SCREW M3X8 PLASTIC	[1]
31	145 1719 000	4	SPACER HEX M3 L.12 BRASS MF10 H 3050	[1]
32	145 3684 000	1	Diode 1N 5408	[1]
33	145 4663 000	1	FRAME F/BATTERY 5120	[1]
34	145 5807 000	1	DUST PROTECTION SPONGE	[1]
35	145 5358 000	9	CHAIN PLASTIC WHITE F BATTERY STOP	[1]
36	145 6126 000	1	Batterie-Trog	[3]
37	145 9481 000	1	FUSE 2,5A	
38	145 5899 000	1	PROTECTION	[1]
39	145 8511 000	1	Sicherung 5A F 5X20	[1]
40	145 5898 000	1	PROTECTION	[1]

## Part Notes:

- [1] - GUARANTEE DATE EXPIRED
- [2] - SEE BATTERY PROGRAM
- [3] - STOCK COVERS GUARANTEE



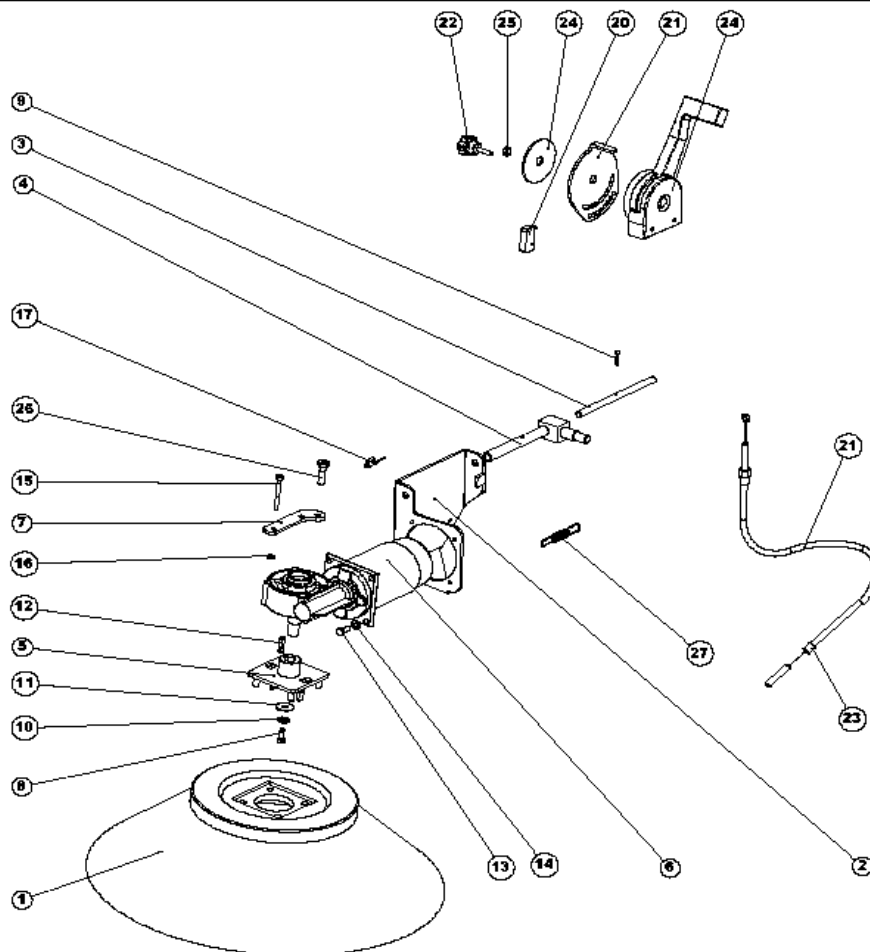
Resource notes:

Pos.	Artikel-Nr.	Menge	Variante	Notes
01	145 5955 000	1	SUPPORT FOR CENTRAL COVER	[1]
02	145 5673 000	1	GREY 7001 RIGHT SIDE UNDE	[1]
03	145 5978 000	1	Grey 7001 left side under	[1]
04	145 5679 000	1	Grey 7001 undercover	[1]
05	145 5695 000	1	Fuel tank	[1]
06	33023299	1	CAP FUEL TANK D.61X5 SIP	[2]
07	145 5697 000	1	HOLDER RUBBER F FUEL TANK	
08	145 5680 000	1	Deckel für ElektronikSR 1300	[1]
09	146 0672 000	1	JOYSTICK KIT	[1]
10	145 0399 000	2	Scharnier Aluminium	[1]
11	145 5686 000	1	SEAT HOLDER BONNET GREY	[1]
12	145 5683 000	1	SEAT BONNET REINFORCEMENT	[1]
13	145 5975 000	1	Fahrsitz f. SR 1300	
15	145 5725 000	1	BOX ELECTRIC COMPONENTS	[1]
16	145 5824 000	1	COVER BOX ELECTRIC	[1]
17	145 5834 000	1	PROTECTION WIRE-NET	[1]
18	145 5835 000	2	PROTECTION WIRE-NET	[1]
19	145 1129 000	4	Unterlegscheibe	[2]
20	33004578	4	Schraube TPSEI 6x20	
21	145 5698 000	1	O-RING 3081	
22	145 5956 000	1	SUPPORT FOR LATERAL COVER	[1]
23	145 5957 000	1	Support for lateral cover	[1]
24	145 4984 000	2	SUPPORT	[1]
25	145 5863 000	1	Joystick-Aufkleber	[1]
26	145 6084 000	1	DECAL BATTERIES CONNECTION DIAGRAM	[1]
30	146 0249 000	1	DECAL FUEL	[1]
32	145 0820 000	1		
33	145 0810 000	1		

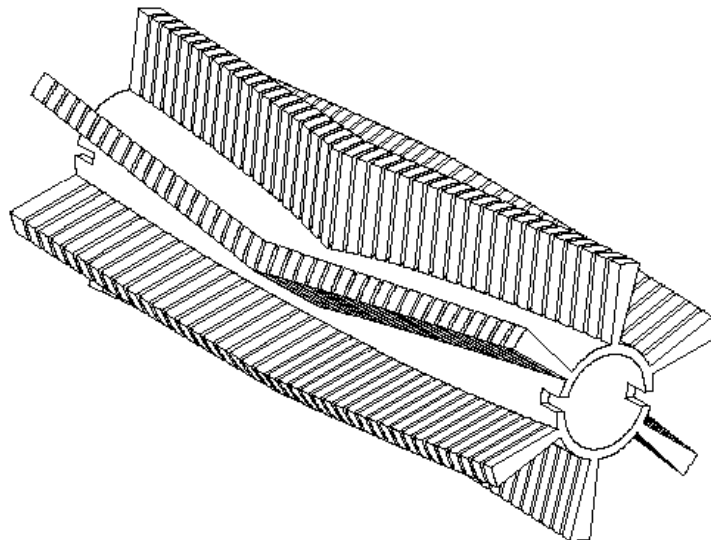
## Part Notes:

- [1] - GUARANTEE DATE EXPIRED  
 [2] - STOCK COVERS GUARANTEE

OPT 1: GRUPPO SPAZZOLA LATERALE SX / LEFT SIDE BRUSH



OPT 2: SPAZZOLA CENTRALE / MAIN BRUSH



Resource notes:

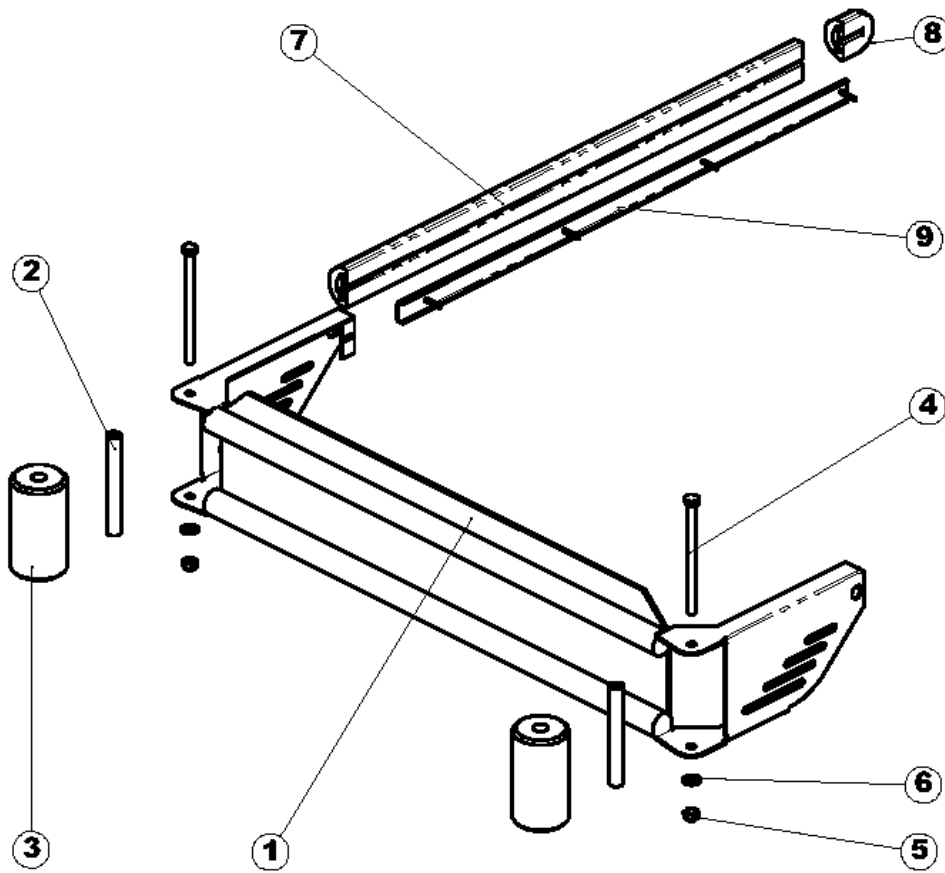
Pos.	Artikel-Nr.	Menge	Variante	Notes
00	145 4968 000	1	BROOM MAIN 300X800 CHEVRON 6R PPL 0.8	[1]
00	145 5892 000	1	SIDE BROOM LEFT KIT	[2]
00	145 5890 000	1	LEFT SIDE BRUSH KIT U.M.	
00	145 5891 000	1	LEFT SIDE BRUSH KIT PPL 0	
00	145 4963 000	1	Kehrwalze 300x800 mm, Stahlmix	
00	145 4881 000	1	Kehrwalze 300x800 mm, PP 0,7-1,4	[3]
01	145 1900 000	1	Seitenbesen PP 1,4 250X460 mm	[1]
01	145 4964 000	1	Seitenbesen Nylon/Stahlzu SR 1200/1300	[1]
01	145 4965 000	1	BROOM SIDE 250X460 PPL 0.5	[1]
02	1463152000	1	Aufhängung Links	
03	145 1951 000	1	Bolzen	
04	145 1792 000	1	Bolzen	
05	146 0402 000	1	Flansch 14 mm SeitenbesenSchnellkupplung	
06	145 1777 000	1	REDUCTION GEARMOTOR 90W 24V LEFT	[1]
07	145 1831 000	1	Halter	[1]
08	145 1218 000	2	Schraube M6x16mit Linksgewinde	[1]
09	145 9624 000	1	Splint	
10	145 2644 000	1	BELLEVILLE WASHER 6.2X15X0.5 DIN2093	
11	1466332000	1	WASHER 6X24X2 UNI6593 10 PCS SET	
12	1466146000	1	KEY 5X5X25 UNI6604A PKD	
13	33023255	4	SCREW M6X16 HEX ISO4017 10 PCS SET	
14	33005913	4	WASHER M6 UNI6592	
15	33004335	2	Schraube M5x50	[1]
16	33023195	2	WASHER M5 UNI6592 10 PCS SET	
17	1464434000	1	Kohlebürsten 2Stück	
18	145 1987 000	1	RETAINER LEFT SIDE BROOM	[1]
19	33003324	1	Hebel Seitenbesen	
20	1466505000	1	MICROSWITCH 6A 250V	[1]
21	145 8933 000	1	Kabelzug Seitenb. 5110/20	
22	145 9746 000	1	Rändelschraube 6x20 mmnicht mehr bestell	[1]
23	145 2390 000	1	Büchse	[1]
24	145 1986 000	1	Buchse d.12,5xd.65x1	[1]
25	1467026000	1	SPACER D.8X12 H.5 ZNT SIP	
26	145 0234 000	1	Justierer	[1]
27	145 9184 000	1	Feder	

## Part Notes:

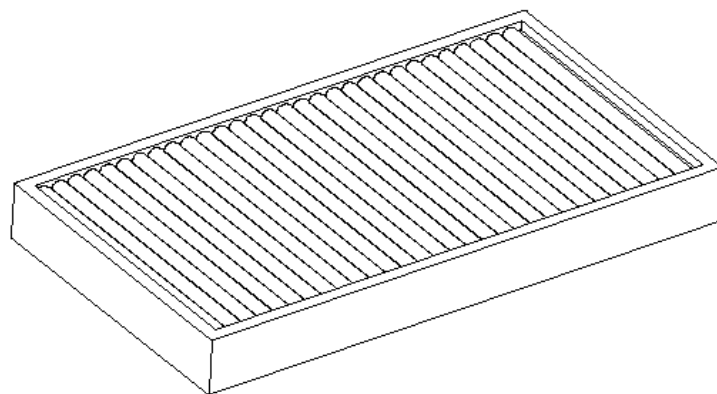
- [1] - GUARANTEE DATE EXPIRED
- [2] - OBSOLETE
- [3] - STOCK COVERS GUARANTEE



OPT 3: GRUPPO PARAURTI ANTERIORE / FRONT BUMPER KIT



OPT 4: FILTRO IN POLIESTERE / POLYESTER FILTER

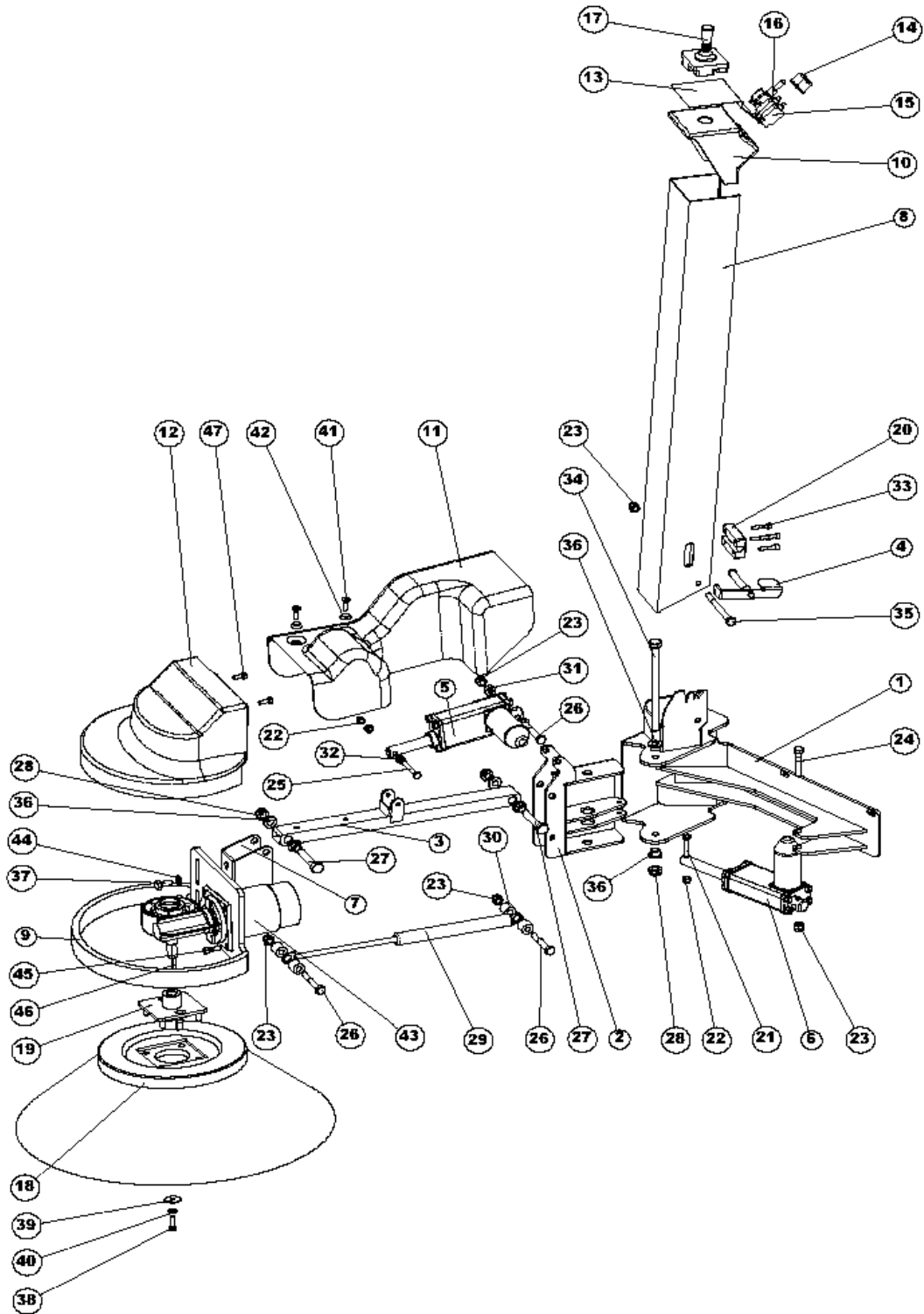


Resource notes:

Pos.	Artikel-Nr.	Menge	Variante	Notes
00	145 6013 000	1	Staubfilter, Polyester, waschbar	
00	145 5904 000	1	Front roller bumper assem	[1]
01	145 5713 000	1	MOUNTING BRACKET	[1]
02	145 5628 000	2	Achse f. Abweisrolle	[1]
03	145 5627 000	2	BUMPING ROLLER	[1]
04	145 5626 000	2	Schraube f. Abweisrolle	[1]
05	L08601000	2	Sechskantmutter M12	[2]
06	33003720	2	U-Scheibe	
07	145 5967 000	2	SIDE GUARD L 835	[1]
08	145 4640 000	2	Stossdämpferendstück	[1]
09	145 5968 000	2	SIDE RUBBER PLATE	[1]

## Part Notes:

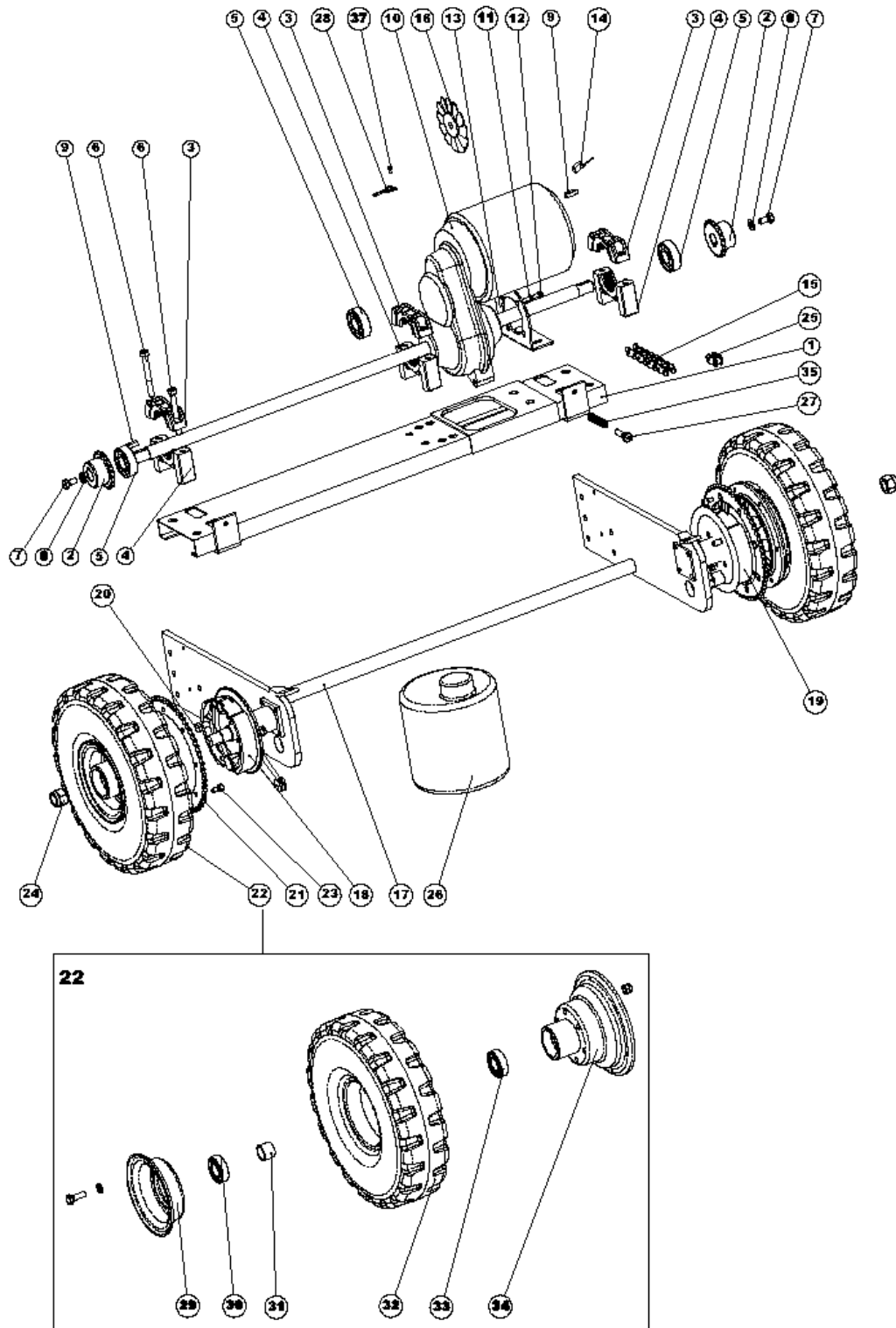
- [1] - GUARANTEE DATE EXPIRED
- [2] - STOCK COVERS GUARANTEE



Pos.	Artikel-Nr.	Menge	Variante	Notes
00	146 0226 000	1	BROOM 3RD PPL KIT	[1]
00	146 0269 000	1	HARNES THIRD BROOM	[1]
01	146 0251 000	1	FRAME	[1]
02	146 0259 000	1	SUPPORT	
03	146 0260 000	1	ARM	
04	146 0263 000	1	PEDAL	[1]
05	146 0270 000	1	ACTUATOR LINEAR 24V DC STRK 62MM 32MM/S	[1]
06	146 0271 000	1	ACTUATOR LINEAR 24V DC STRK 100MM 32MM/S	[1]
07	146 0261 000	1	SUPPORT	[1]
08	146 0262 000	1	COLUMN	[1]
09	146 0264 000	1	MOTOR SUPPORT	
10	146 0265 000	1	PANEL	
11	146 0266 000	1	COVER	
12	146 0267 000	1	COVER	
13	146 0268 000	1	PANEL LABEL	
16	145 8261 000	1	SWITCH 15A	[1]
18	145 1900 000	1	Seitenbesen PP 1,4 250X460 mm	[1]
19	146 0402 000	1	Flansch 14 mm SeitenbesenSchnellkupplung	
20	145 9954 000	1	BLOCK	
21	33023227	1	SCREW M6X35 HEX HD ISO4017 10 PCS SET	[2]
22	33005562	2	Mutter M6	
23	33023207	5	NUT SELF L. M8 UNI7473 10 PCS SET	
24	33003999	1	SCREW M8X45 HEX HD F/THD ISO4017	[1]
25	33003980	1	Schraube M6x45	
26	33003793	3	SCHRAUBE M8X55 UNI5737	
27	9100000780	2	SCREW M10X55 HEX HD ISO4017 10 PCS SET	[2]
28	33005566	3	Selbstsperrende MutterM10	
29	145 8836 000	1	SPRING GAS 50 KG	[1]
31	146 0275 000	2	SPACER 8.2X16 H.6 GALV.	[1]
32	145 2661 000	2	SPACER 6.5X12X5.5	[1]
34	146 0277 000	1	SCREW M10X160 HEX HD P/THD ISO4014	[1]
35	33003799	1	SCREW M8X90 HEX HD P/THD ISO4014	[1]
36	146 0272 000	6	BUSH 10X14X10	[1]
37	33005444	1	Schraube M8x20 verzinkt	
38	145 1218 000	1	Schraube M6x16mit Linksgewinde	[1]
39	1466332000	1	WASHER 6X24X2 UNI6593 10 PCS SET	
40	33005851	1	Unterlegscheibe	
41	33004578	2	Schraube TPSEI 6x20	
42	145 1129 000	2	Unterlegscheibe	[2]
43	145 5200 000	1	REDUCTION GEARMOTOR 60W 24V RIGHT	[1]
44	33023208	1	WASHER M8 UNI6592 10 PCS SET	
45	33023653	1	SCREW M6X20 HD HEX ISO4762 10PCS.SET	
46	1466146000	1	KEY 5X5X25 UNI6604A PKD	
47	33023255	2	SCREW M6X16 HEX ISO4017 10 PCS SET	

## Part Notes:

- [1] - GUARANTEE DATE EXPIRED  
[2] - STOCK COVERS GUARANTEE



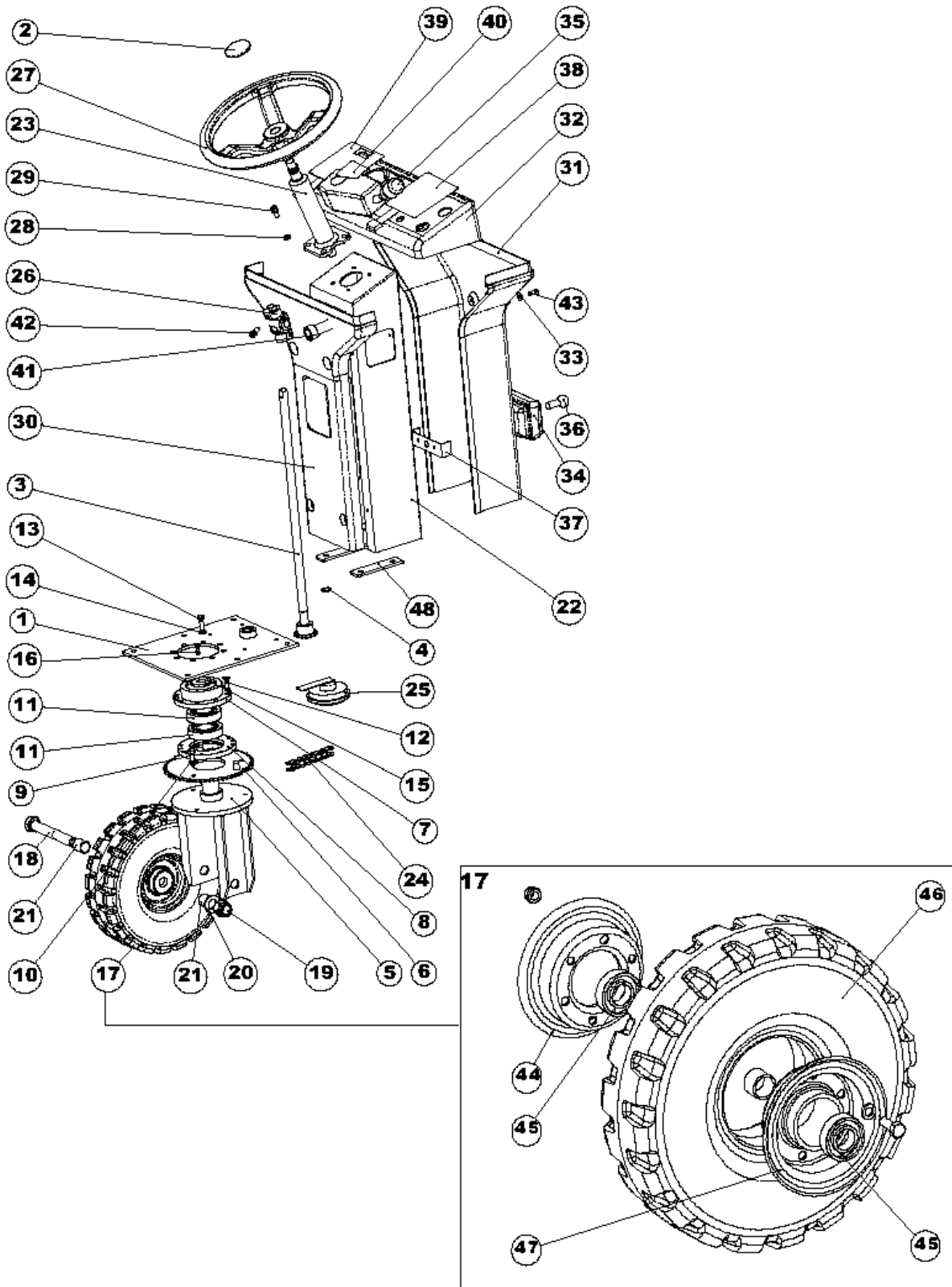
Resource notes:

POSITION 26 NO MORE AVAILABLE

Pos.	Artikel-Nr.	Menge	Variante	Notes
00	146 0361 000	1	SCREW 2.9X6.5 SELF HEX HD ISO1479	[1]
01	145 5689 000	1	MOTODIFFERENTIAL SUPPORT	[1]
02	145 5850 000	1	SPROCKET T19 3/8	[1]
03	145 1977 000	3	Lagerbock oben	
04	145 1976 000	3	Lagerbock unten	
05	145 1123 000	3	Lager YAT204	
06	33004170	6	Schraube M8X80 Uni 5931	[2]
07	33003993	2	Schraube M 8x16	
08	33023208	1	WASHER M8 UNI6592 10 PCS SET	
09	145 9776 000	2	Keil 6x6x35V 17-044	
10	145 5848 000	1	Elec. motor with diff.gea	[1]
11	33005912	4	Unterlegscheibe M5	
12	33004332	4	SCREW M5X35 CAP HD HEX SOCK ISO4762	[1]
13	145 5954 000	1	BRACKET FOR MOTODIFFERENT	[1]
14	L08603949	1	Kohlenbürsten Kit 4pcs	
15	145 8143 000	2	"Kette 3/8"" 123 SW1200"	[1]
16	145 6012 000	1	FAN	
17	145 5664 000	1	BACK WHEELS BRIDGE	[1]
18	1465125000	1	BRAKING SYSTEM KIT	[3]
20	33003993	8	Schraube M 8x16	
21	145 5692 000	2	SPROCKET T60 3/8	[1]
22	145 8422 000	2	Rad hinten SW 1500	[3]
23	33023672	2	SCREW M6X12 CAP HD ISO4762 10 PCS SET	[1]
24	1467189000	1	NUT LOCK HEX M16 LOW ISO10511 5 PCS SET	
25	145 1410 000	2	LINK HALF 3/8	[1]
27	145 5982 000	2	Einstellschraube	[1]
28	145 5711 000	1	THERMOCOUPLE	[1]
29	145 8789 000	2	SEMICIRCLE	[1]
30	145 8146 000	2	BEARING BALL 6004 2RS	[1]
31	145 8790 000	2	SPACER 20X24X18	[1]
32	145 2352 000	2	Pneu 4.00-4 superelastisc	[3]
33	L08183900	2	LAGERSiehe 145 8134 000	
34	145 8788 000	2	SEMICIRCLE W/HUB	[1]
35	145 6090 000	2	SPRING COMPRESSION D.E.11.25 WIRE D.1.3	[1]
36	146 0361 000	1	SCREW 2.9X6.5 SELF HEX HD ISO1479	[1]

## Part Notes:

- [1] - GUARANTEE DATE EXPIRED
- [2] - SEE PI 2017-002
- [3] - STOCK COVERS GUARANTEE



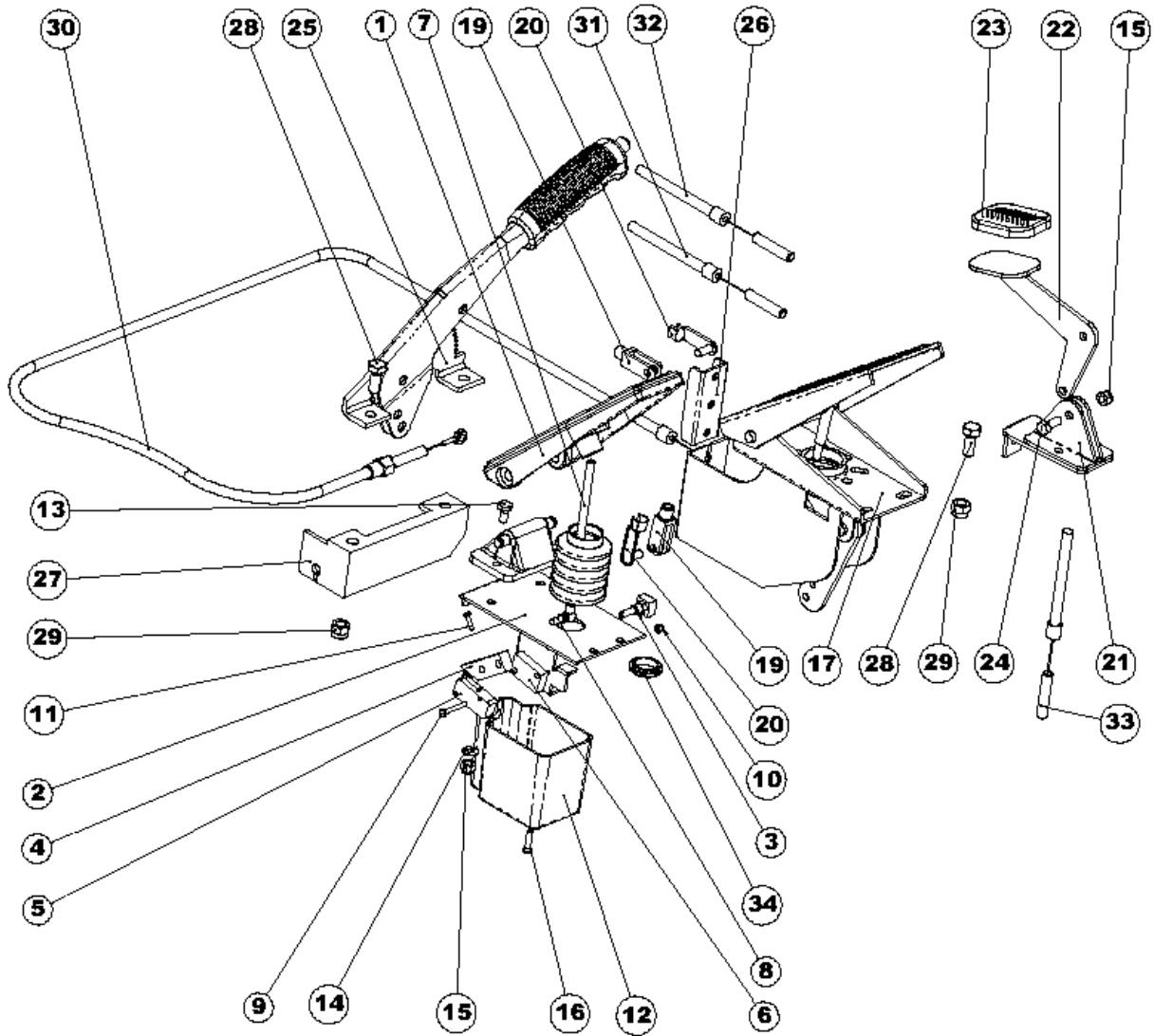
Resource notes:

Pos.	Artikel-Nr.	Menge	Variante	Notes
01	145 1847 000	1	Platte f. Lenkung	[1]
02	145 8753 000	1	Kappe	
03	145 1793 000	1	SHAFT STEERING	[1]
04	33006056	1	Ring D17	
05	145 5662 000	1	Support	[2]
06	145 2714 000	1	Kranz	
07	145 2586 000	1	FLANGE	
08	145 2587 000	1	FLANGE	
09	33005444	3	Schraube M8x20 verzinkt	
10	33005842	3	U-Scheibe	
11	145 2357 000	2	Kugellager 6207-2RS	
12	33023206	1	SCREW M8X20 C/SUNK ISO10642 10 PCS SET	[2]
13	33005445	8	Schraube M8x25	
14	33005842	8	U-Scheibe	
15	145 2585 000	1	WASHER METAL F STEERING SUPPORT FIXING	
16	33004578	1	Schraube TPSEI 6x20	
17	145 9494 000	1	Rad vorn SW 1500 4.00-4	[1]
18	145 5712 000	1	Schraube	[1]
19	145 4517 000	1	NUT HEX M20 LOW ISO8675	[1]
20	33003724	1	Unterlegscheibe M20	
21	145 9586 000	2	Distanzbüchse	[1]
22	145 5551 000	1	COLUMN STEERING	[1]
23	1466525000	1	COLUMN STEERING SIP	
24	145 1784 000	1	Kette 3/8-68	
25	1467032000	1	HORN 24V 112DB SIP	
26	1466319000	1	JOINT UNIVERSAL D.17 PKD	
27	146 2106 000	1	Lenkrad D. 320	
28	33023208	1	WASHER M8 UNI6592 10 PCS SET	
29	33004364	4	Schraube, M8x16 UNI5931	
30	145 1796 000	1	COVER REAR COLUMN	[1]
31	145 1797 000	1	COVER FRONT COLUMN	[1]
32	145 5887 000	1	Control panel	[1]
33	145 1129 000	4	Unterlegscheibe	[2]
34	145 8244 000	1	Lampe vorn rechts + links	[1]
35	145 5709 000	1	MultifunktionssteckerSR 1100	[1]
36	145 5518 000	1	Lampe 24V/21W	
37	145 3483 000	1	BRACKET	[1]
38	145 1780 000	1	DECAL KEY CONTROL PANEL	[1]
38	145 6130 000	1	KEY CONTROL PANEL	[1]
39	145 5715 000	1	SILK-SCREEN CONTROL PANEL	[1]
40	145 1941 000	1	DECAL MULTIFUNCTION LEVER	[1]
41	145 8366 000	1	PUSH-BUTTON	[1]
42	33004364	1	Schraube, M8x16 UNI5931	
43	33004578	8	Schraube TPSEI 6x20	
44	145 8789 000	1	SEMICIRCLE	[1]
45	145 8146 000	2	BEARING BALL 6004 2RS	[1]
46	145 2352 000	1	Pneu 4.00-4 superelastisc	[2]
47	145 2350 000	1	SEMICIRCLE W/HUB	[1]
48	146 0284 000	2	SPACER	[1]

## Part Notes:

- [1] - GUARANTEE DATE EXPIRED  
[2] - STOCK COVERS GUARANTEE





Resource notes:

Pos.	Artikel-Nr.	Menge	Variante	Notes
01	145 3665 000	1	Fahrpedal zu SR 1300	[1]
02	145 1955 000	1	HOLDER CONTROL PEDAL 5110-5120	[2]
03	145 0283 000	1	Potenzionmeter 5KOHM	[2]
04	145 2590 000	1	Anschlagwinkel	[2]
05	145 4799 000	1	Microschalter 5A	
06	145 4936 000	1	Distanzstück	[3]
07	145 4935 000	1	ROD THREADED M6X48MM	[3]
08	145 8479 000	1	Kugelgelenk M 6-10521	
09	145 1162 000	2	SCREW M3X20 HEX HD F/THD ISO4017	[2]
10	33005601	2	NUT LOCK HEX M3 LOW ISO10511	
11	33003950	1	Schraube	[2]
12	145 4086 000	1	Pedalabdeckung f. SR 1300	
13	33003972	2	Schraube M6 x 12	
14	33005875	2	WASHER PLAIN M6X12 SS ISO7089	[2]
15	33005562	3	Mutter M6	
16	145 4937 000	2	SCREW THD FORM 4,2X19	
17	145 4885 000	1	BRAKE PEDAL	[2]
19	145 9409 000	2	Gabelstück M6 lang zu SW	
20	145 9410 000	2	Clip M 6	
21	145 1839 000	1	Flap-Halterung	
22	145 1841 000	1	PEDAL SKIRT RAIS.DEVICE	
23	145 8478 000	1	Pedalgummi	
24	33023470	1	SCREW M6X20 HEX HD ISO4017 10 PCS SET	
25	145 1783 000	1	LEVER PARKING BRAKE	[2]
26	145 4866 000	1	BALANCE	[2]
27	145 1956 000	1	PLATE BRAKE PEDAL	[2]
28	33005444	5	Schraube M8x20 verzinkt	
29	33005565	5	Selbstsichernde Mutter M8	
30	145 5468 000	1	CABLE BRAKE	[2]
31	145 5800 000	1	brake cable with right fo	[2]
32	145 5801 000	1	brake cable with left for	[2]
33	145 4821 000	1	CABLE SKIRT RAIS.DEVICE	[2]
34	145 2589 000	1	Unterlegscheibe	[1]

## Part Notes:

- [1] - STOCK COVERS GUARANTEE
- [2] - GUARANTEE DATE EXPIRED
- [3] - COMPLEXITY REDUCTION

